

# ARIS Express



With ARIS Express, IDS Scheer is offering its customers the world's first **free Business Process Management (BPM) software** to model and optimize business processes. It's easy and intuitive so anyone can get started; no BPM expertise needed.

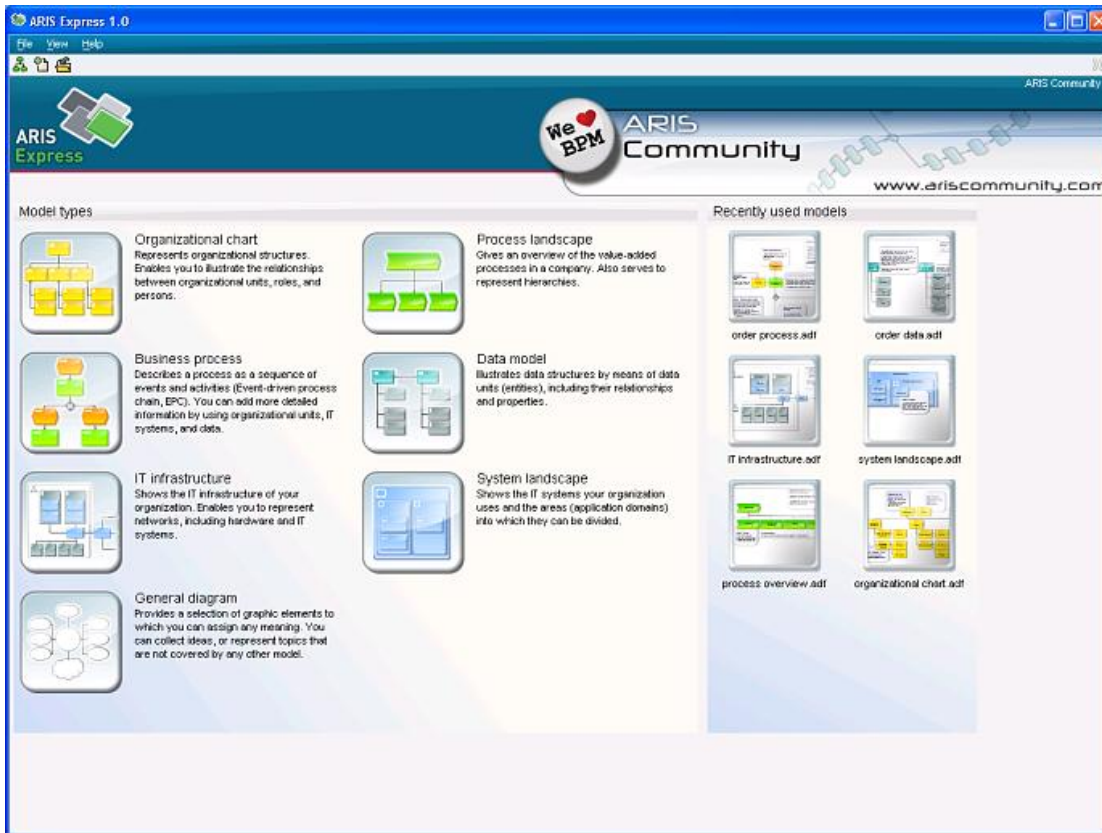
The simple, innovative modeling interface enables **instant results**. Based on the proven ARIS **methodology and industry standards** supported by ARIS Express, decisions can be made on the basis of reliable data. This free version will also appeal to universities and vocational schools, as well as occasional users looking for an introduction to Business Process Modeling.

## Features of ARIS Express

### Your benefits:

- Intuitive user interface – modeling teams can work productively from the start
- Models for organizational structures, processes, application systems, data, and more
- Valuable reference content to complement the free, proven ARIS method
- All results can be reused in professional ARIS Business Process Management tools
- Self-study with free training materials in the [ARIS Community](#)
- ARIS Express is free of charge and can be downloaded and used without an Internet connection

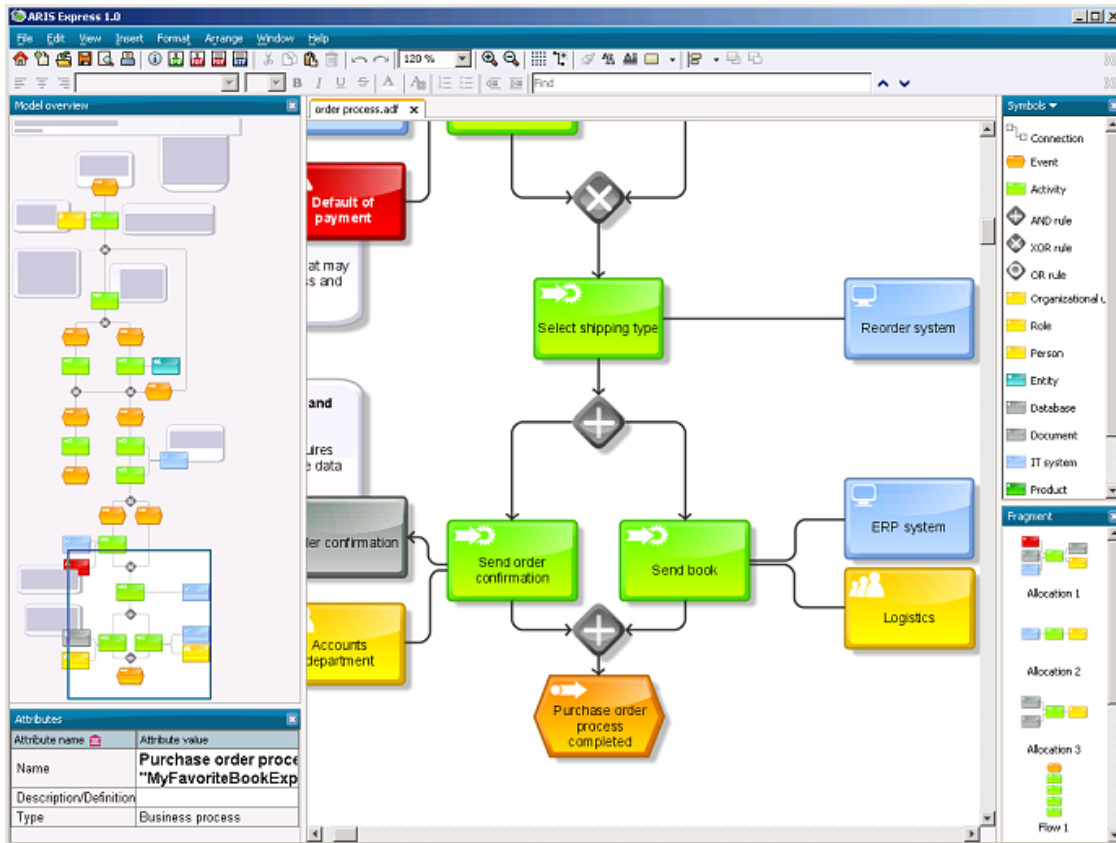
# Screenshots



ARIS Express

Start Page of ARIS Express

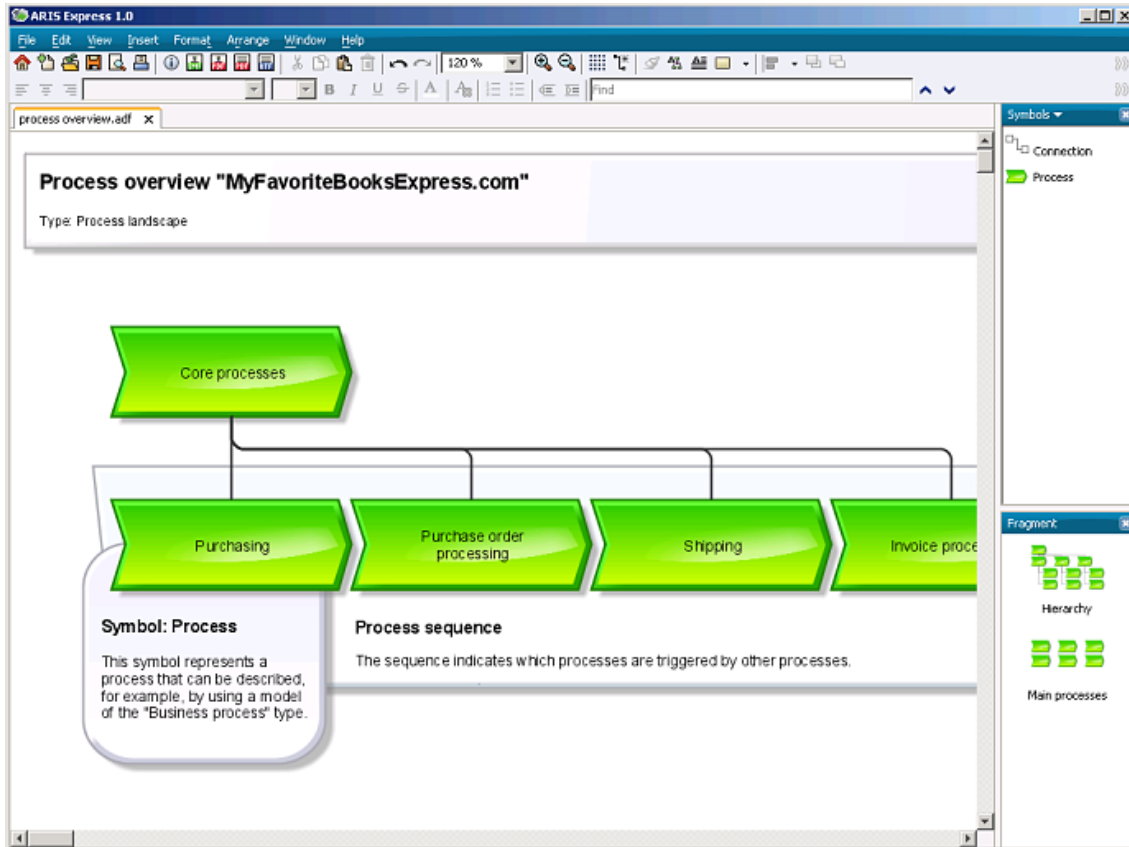
The ARIS Express start page provides users with a quick and easy introduction to gain an initial overview of various model types and recently opened processes.



ARIS Express

## Intuitive and clear user interface

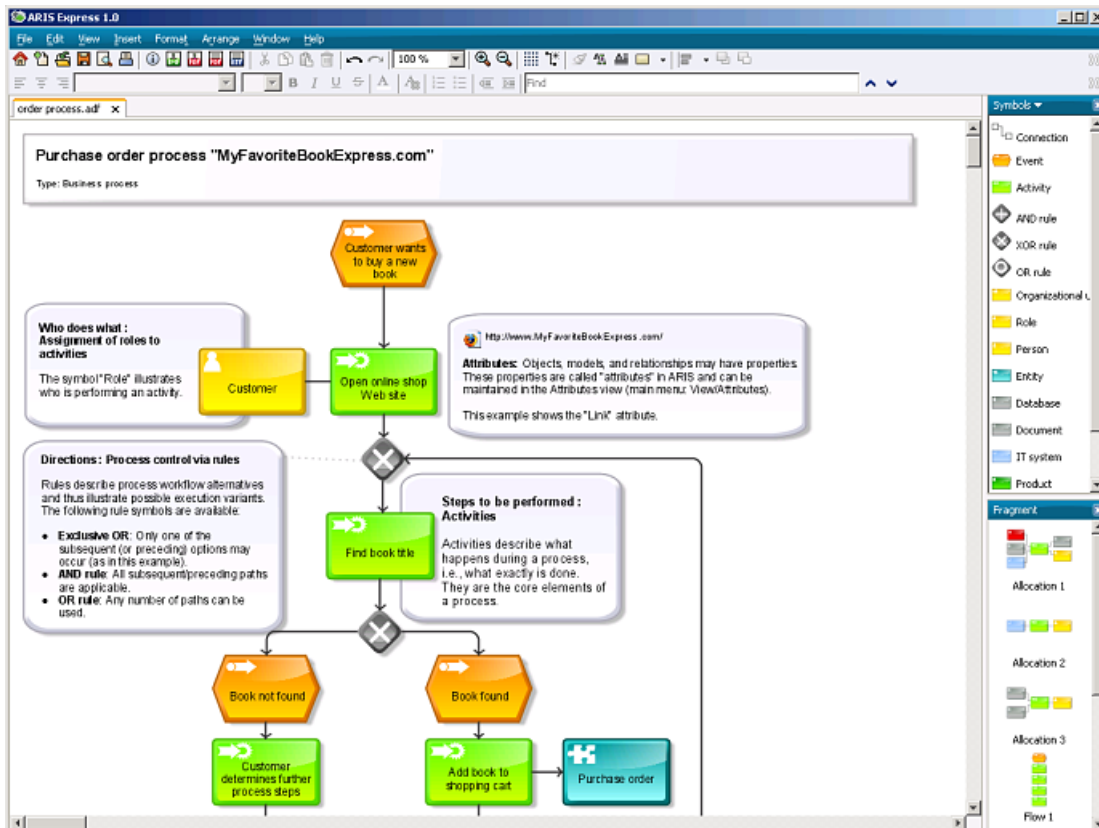
The easy-to-use and innovative modeling interface enables every user to achieve fast result. Moreover, the user interface is completely adoptable to the user requirements.



ARIS Express

## Process landscapes

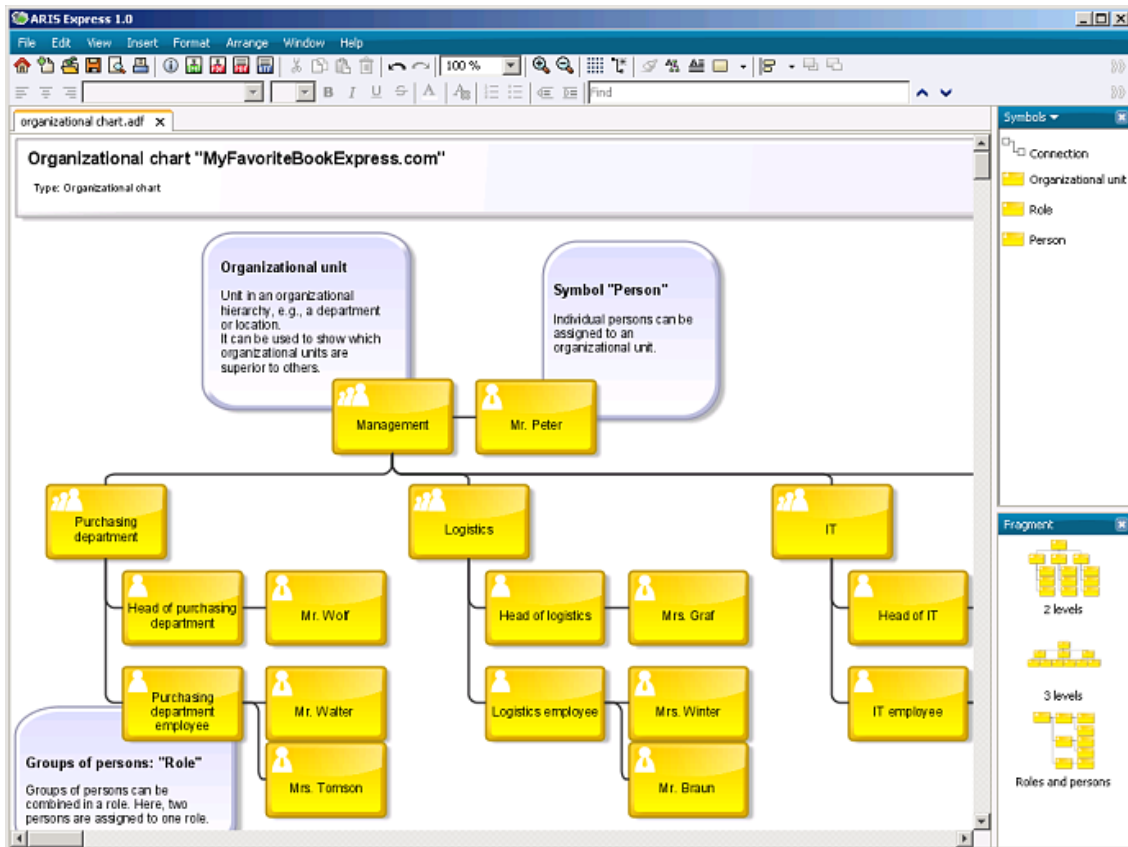
Process landscapes describe process hierarchies and show how processes are divided into subprocesses. Furthermore, process landscapes often serve the purpose of providing an overview of all processes that exist in an organization, e.g., a company.



ARIS Express

## Business process

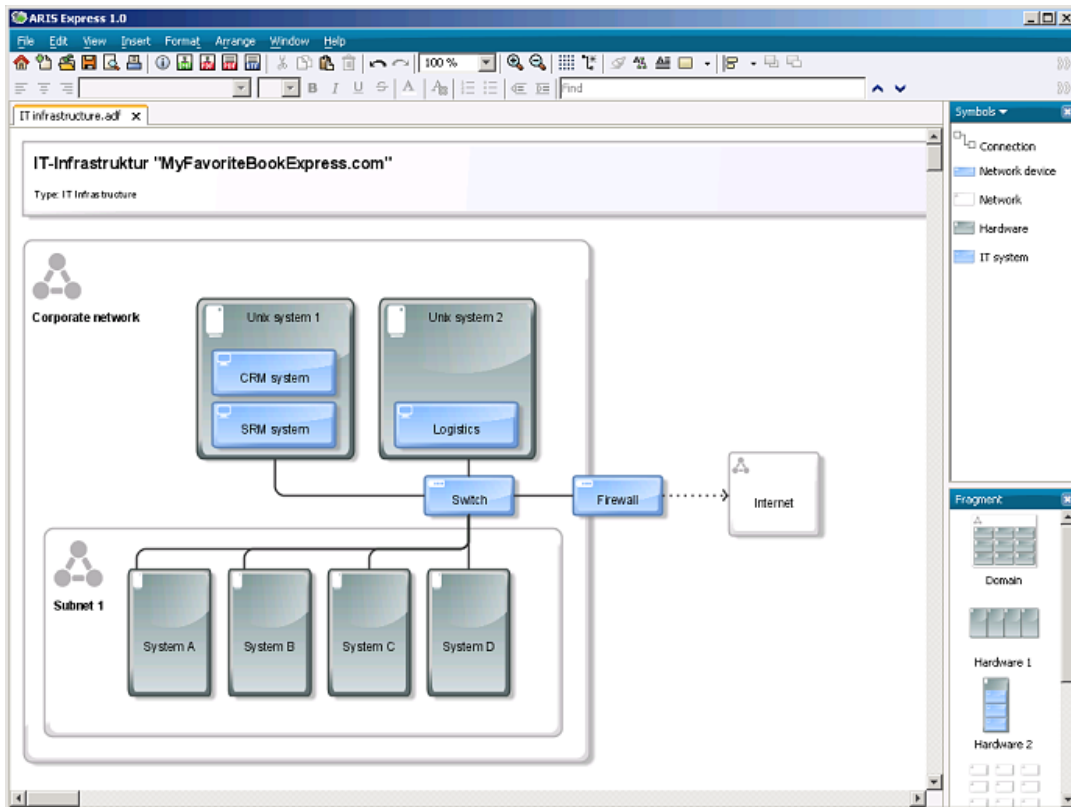
A business process model shows the chronological and logical sequence of activities. In addition, objects like organizational units, IT systems, documents or even risks can be used to complete the description of business procedures.



ARIS Express

## Organizational charts

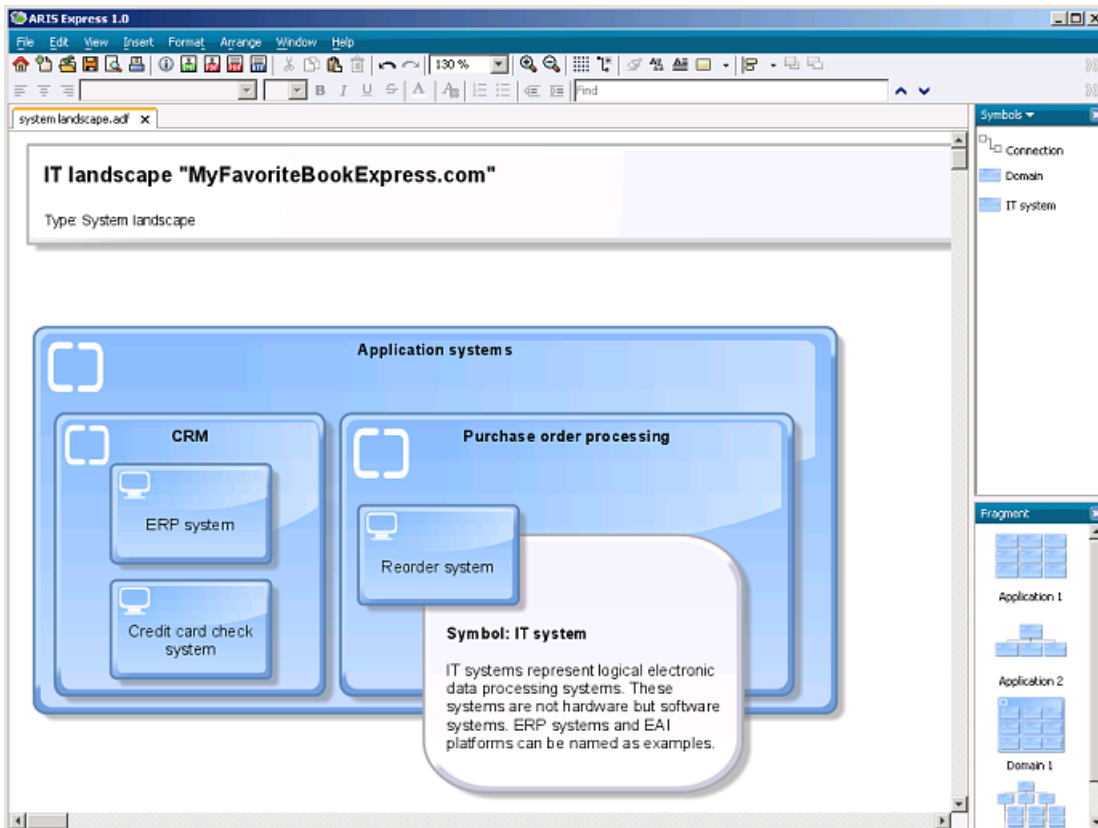
Organizational charts describe the hierarchical structure of an organization. Groups of persons (roles) or individual persons can be assigned to organizational units, e.g., departments or locations.



ARIS Express

## IT infrastructure

An IT infrastructure describes which software systems are running on which hardware, in which network the hardware is located and which network devices (switches, routers, firewalls) are used for interlinking existing networks.

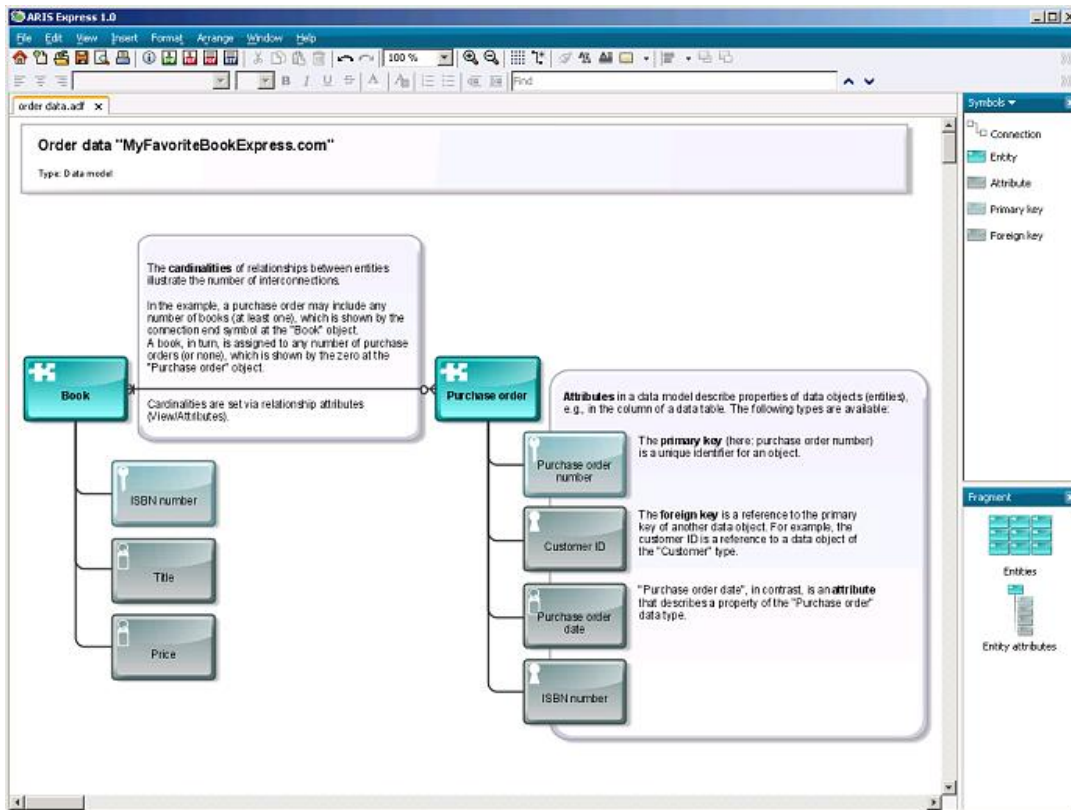


ARIS Express

## System landscapes

System landscapes describe which IT systems belong to which logical units (domains).

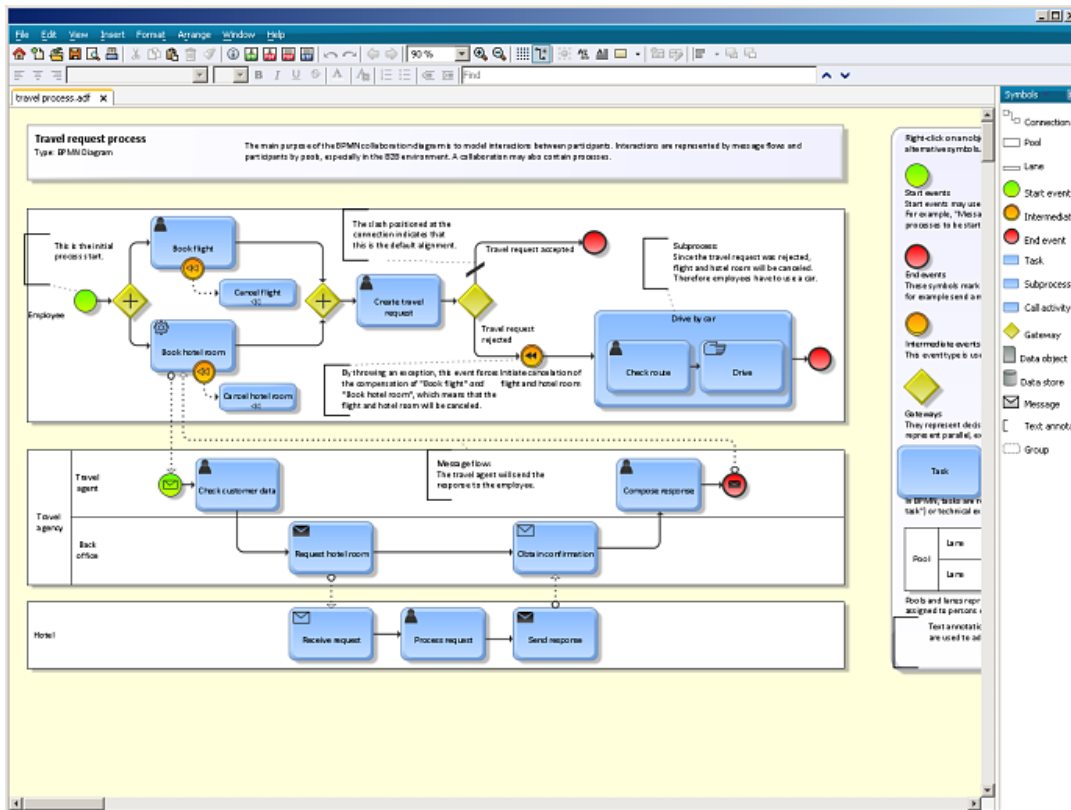




ARIS Express

## Data model

The data model (IE data model, information engineering) describes on an abstract level how data interrelate. It is part of entity relationship modeling and used for describing database tables, for example.



ARIS Express

## BPMN Modell

ARIS Express supports already the latest version 2.0 of BPMN. You can use BPMN to create technical and business process models in the familiar swimlane form. A business process diagram represents the process flow between different process participants.